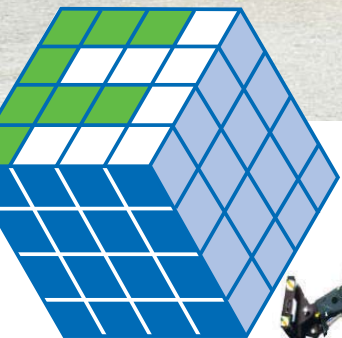
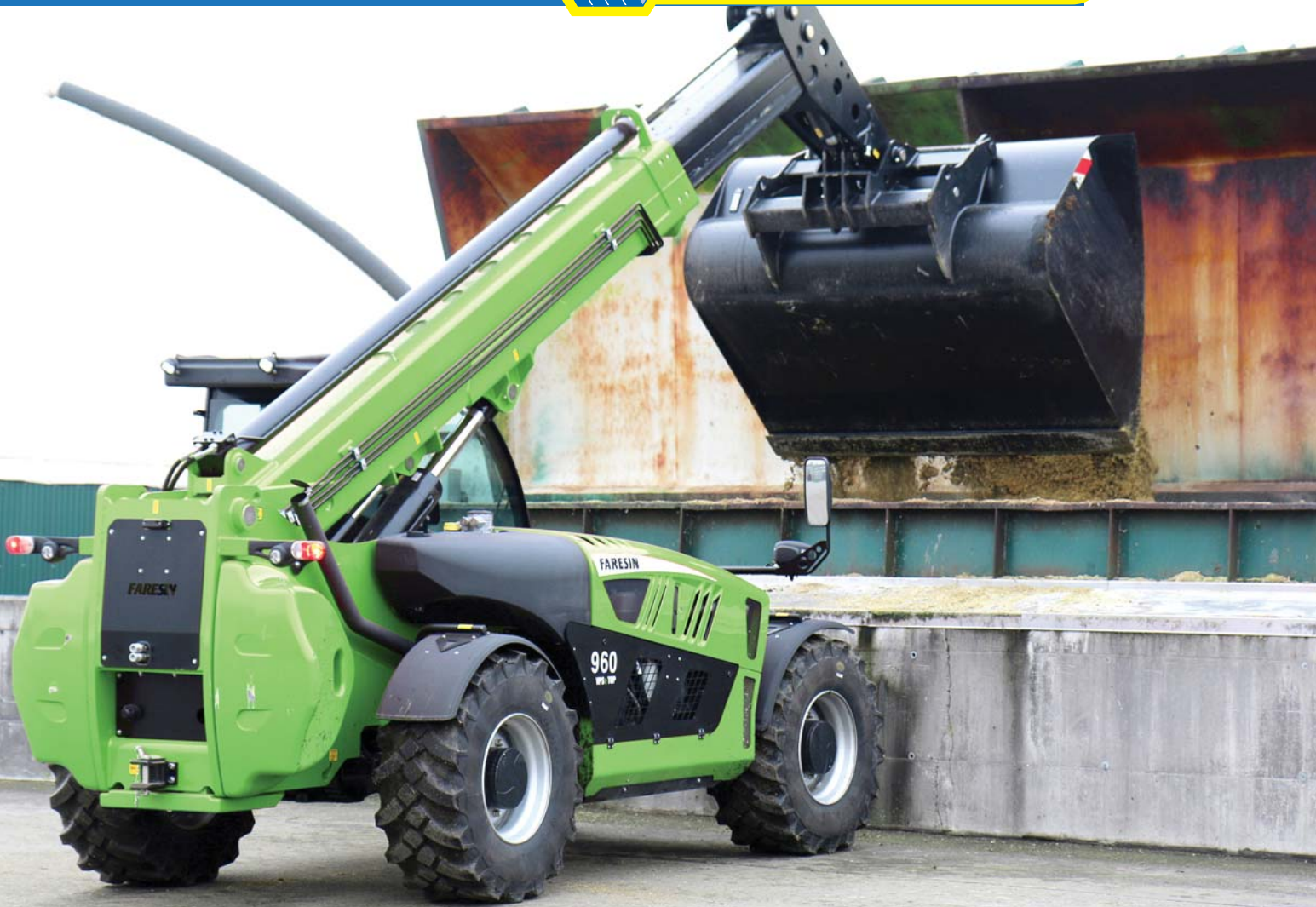


HEAVY DUTY RANGE
9.60 - 9.70 - 10.65



TELESCOPIC HANDLERS **AGRICULTURAL LINE**

Heavy Duty Range

Available configurations: GLS / VPSe

Maximum lifting capacity 7t

Maximum height 8.8m to 9.5m

The three models in the new Heavy Duty range offer power, precision and control. Available in different transmission configurations with a maximum speed of up to 40 km/h and 4 driving modes. The heavy duty range comes in Classic, GLS and VPSe configurations.

They offer great capacity for moving material without losing any of the great performance of the machine, and they are right at home on the large farm holdings and big construction sites or for moving large and/or heavy materials.



Nothing is more important to us than your safety.

QLD LOGANHOLME - BEAUDESERT - DALBY - GOONDIWINDI
NSW MOREE - INVERELL - COONAMBLE - WARREN - DUBBO - RUTHERFORD
VIC TAREE - MACLEAN - WAGGA WAGGA - TAMWORTH
SA WODONGA - MILDURA
WA PINNAROO - LOXTON
ESPERANCE - ALBANY - GNOWANGERUP

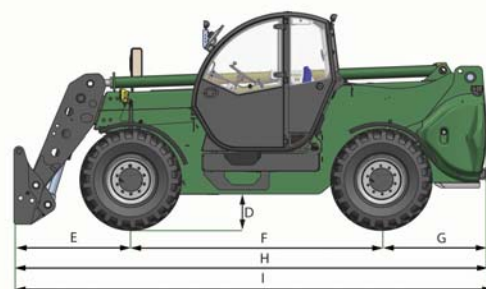
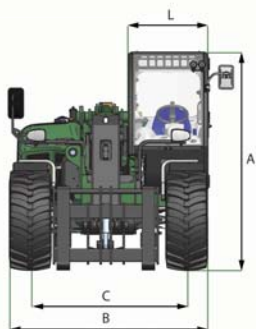
For more information on our Faresin range of products contact;

1300 FARESIN (327 374)

www.faresinindustries.com.au

Images for illustration purposes only. All information contained is subject to change without notice.

DIMENSIONS	9.60	9.70	10.65
A. Height	2550	2550	2550
B. Width	2334	2334	2334
C. Gauge	1840	1840	1840
D. Ground clearance	410	410	410
E. Front overhang	1373	1373	1673
F. Pitch	2950	2950	2950
G. Rear overhang	1265	1265	1265
H. Length without tow hitch	5588	5588	5888
I. Length with tow hitch	5654	5654	5954
L. Cabin width	960	960	960



MODELS	9.60	9.70	10.65
WEIGHT			
Maximum total unladen weight (kg)	10700	10700	10700
SPECIFICATIONS			
Number of extracting sections	1	1	1
Max capacity (kg)	6000	7000	6500
Max lifting height (m)	8,8	8,8	9,5
Max horizontal boom extension (m)	4,75	4,75	5,4
Boom extension at max height (m)	0,15	0,15	0,35
Swinging angle of forks (°)	122	122	122
TANK CAPACITY			
Hydraulic oil tank (l)	150	150	150
Diesel oil tank (L)	120	120	120
Hitch	FH	FH	FH

CONFIGURATION	GLS	VPSe
Engine (kW/HP)	Deutz 103/140 IIIA	Deutz 103/140 IIIA
Transmission	Carraro 4 Speed (2 Hydraulic, 2 Mechanical)	Continuous speed variation
Service pump (l/min)	Prop. Ls 152 @ 250 bar	Prop. Ls 152 @ 250 bar
Joystick	Hydraulic electro proportional	Hydraulic electro proportional
Display	Multi-purpose	Multi-purpose
Queen Cab cabin	standard	standard
Front and rear LED lights	standard	standard
Manual 6-way diverter	standard	standard
Rear hydraulic connection with dual electro proportional effect	optional	optional
Rear trailer lights socket	optional	optional
Raising recycling valve	standard	standard
Engine water pre-heating	optional	optional
Air conditioning	standard	standard
Hydraulic trailer brakes	optional	optional
Pneumatic trailer brakes	optional	optional
Boom suspension	standard	standard
Floating boom	standard	standard
Front constant flow	standard	standard
PEB manual 6-way diverter	optional	optional
PEB	optional	optional
Reversing Fan	standard	standard
Wheels 18-22.5	standard	standard
Version 40 km/h	standard	standard
Radio	optional	optional
Side levelling	standard	standard
Shovel mode	optional	optional



For more information on our Faresin range of products contact;
1300 FARESIN (327 374)
www.faresinindustries.com.au